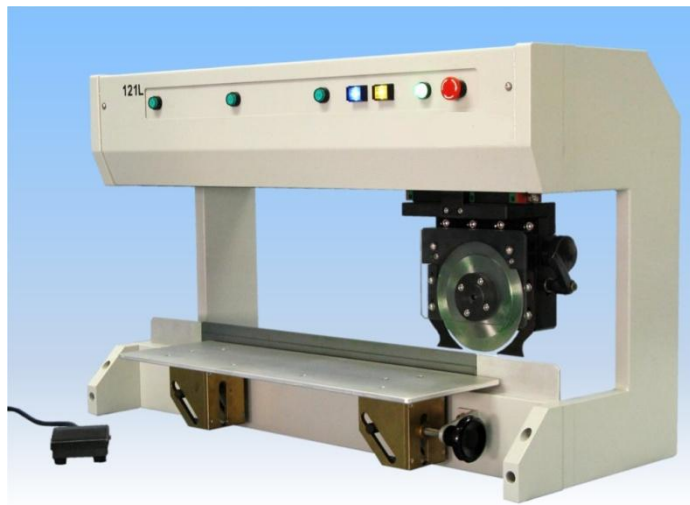


Separating and Depaneling Machine - 121L

121L is motor driven depanelizer for medium to high volume production. Separating length is programmed by switches. After score line is aligned, activate the foot switch, a fast and clean cuts completed easily.



Features

Motorized circular blade moves against the linear blade ensure clean, burr-free while eliminating stress.

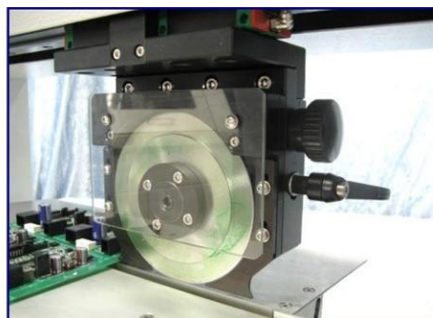
The separating length is programmed by position keys which also indicate the blades travel limits.

Upper circular blade can be adjusted precisely by the rotary knob to fit different PCB v-scored remaining thickness.

Quick lock design ensures easy lock and unlock the upper blade.

Working table height can be adjusted continuous by the side rotary knob to a most suitable supporting height.

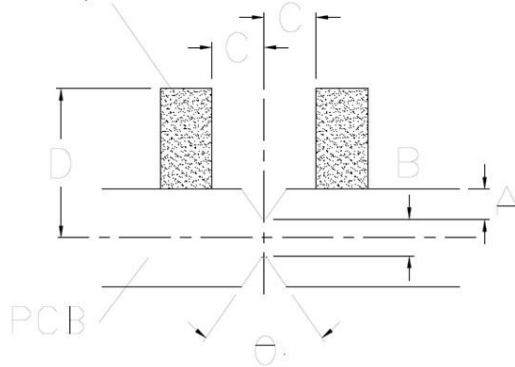
Large working table (500mm x 165mm) on both side of the linear blade.



Specifications

121L Motorized Circular and Linear Depaneling Machine

Component



PCB Thickness: 1.0mm to 3.2mm

V-scoring line specification:

- Depth of scoring A: $\geq 0.25\text{mm}$ (typical 1/3 PCB thickness)
- Remaining PCB thickness B: Maximum 1.0mm
- Component from scoring C $\geq 1\text{mm}$ *
- Scoring angle $\theta \geq 20^\circ$ (typical) *
- Max. component height D = 32mm

Dimensions	750 mm(L) x 352 mm(W) x 469 mm(H)
Net Weight	43 Kg
Max PCB separating length PCB:	460 mm
Separation	DC Motor driven
Separating speed	300, 500 mm/sec
Power	220V~50Hz, 110V~60Hz (Factory)