

# SOLDER PREFORM FEEDER

NEW

Create your own preforms from simple solder wire

An amazingly straightforward and cost-effective solution that eliminates the need to purchase expensive preforms: Standard solder wire is used to create preforms, which are then applied on the board using existing P&P machines.



WIRE



PREFORMS



PICK & PLACE ASSEMBLY

ASI  
SPF



Many SMT assembly designs require applying a larger solder volume in certain locations.

Traditional co-planar stenciling often fails to deliver the necessary solder volume. The alternatives, for example, dispensing or manual soldering, are insufficiently efficient, time consuming, and may damage components or the PCB.

In such situations many companies use solder preforms, which is probably the best way to add a solder. However, preforms in tape and reel packaging are expensive and increase production costs.

With its new Automatic Solder Preform Feeder, ASI offers an elegant and cost-effective solution, which also simplifies the entire preform production process. Using a standard solder wire reel, the feeder automatically produces the preforms and feeds them, to be picked up and placed on the assembly. Solder wires of different diameters can be used to produce different sized preforms.



PATENT PENDING

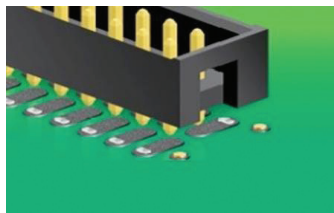
- High efficiency, 0.25 sec/preform
- Small width (36 mm), light weight
- Pure electric, low-level noise
- Working with any brand of solder wire
- Customizable to any mounter brand and type. Currently: Siplace (D and X series), Juki, Samsung, Fuji (XP242, XP243), Yamaha, Panasonic (402, 602, NPM)

- Can be applied to any location with particular need for additional solder
- Excellent solder ability, no-clean, environment-friendly, convenient
- Reduces labor costs
- Enhances quality

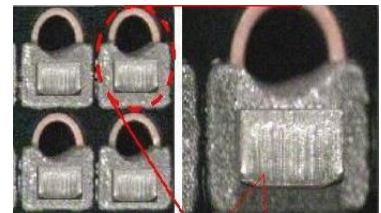
WIRE DIAMETER	PRE-FORM SIZE (LxWxH)	FEEDER TYPE
0.5 mm	1.00 x 0.70 x 0.30 mm	SPF-0402
0.6 mm	1.60 x 0.90 x 0.40 mm	SPF-0603
0.8 mm	1.60 x 1.10 x 0.50 mm	SPF-0603L
0.8 mm	2.00 x 1.20 x 0.45 mm	SPF-0805
1.0 mm	2.00 x 1.35 x 0.60 mm	SPF-0805L
1.2 mm	3.20 x 1.60 x 0.60 mm	SPF-1206
1.5 mm	3.20 x 1.75 x 1.00 mm	SPF-1206L
2.0 mm	4.00 x 2.50 x 1.30 mm	SPF-1510



Adding 0805 preform



Adding 0603 preform



Adding 0603 preform to T.H

