

# AUTOMATIC LABEL FEEDER

A highly accurate and cost-effective solution  
for placing labels on SMT assemblies

# ASI

ALF-300

ALF-500

ALF-700

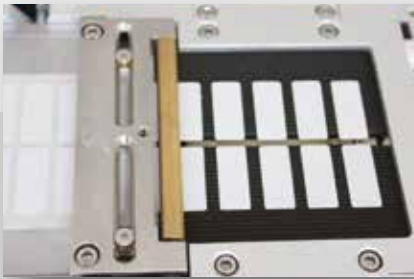


Traceability is the key requirement for the improvement process. The production and inspection history of each individual PCB must be documented to allow further verification and analysis. This necessitates automatic board identification, which is customarily achieved by applying barcode labels to each board. However, due to the growing density and complexity of PCB assemblies, and the smaller dimensions of the labels, placing barcodes at the required level of precision is becoming increasingly challenging.

ASI's Automatic Label Feeder presents a unique solution, which allows placing barcodes and other labels easily, accurately and cost-effectively.

ALF is compatible with existing placement machine models, eliminating the need for purchasing costly additional equipment. With ALF, labeling is quicker and more precise than ever before.

- Synchronous stripping and transport to ensure accuracy and speed
- Compatible with placement machines currently in use
- Eliminates the need for manual placement and associated potential human error
- Customizable to different materials and feeds, adhesive label types
- Custom high-precision sensor; accuracy level: 0.07mm
- Customizable to any mounter brand and type. Currently Siplace (D and X series), Juki, Samsung, Fuji (XP242, XP243), Yamaha, Panasonic (402, 602, NPM)
- Utilizes a separate control system – accurate electronic drive, stable and reliable
- LCD real-time status display and a variety of mode
- Cost savings: No need to purchase new equipment, reduced labor costs



LCD microcomputer control box.

Automatic and manual modes, real-time display of production status.



Separate feed reel and output spool. Greatly improves process accuracy and stability.



	ALF-300	ALF-500	ALF-700
Label strip width	10-32mm	10-52mm	10-70mm
Label length range	4-60mm		
Motion speed	20mm/Sec		
Motion accuracy	5um		
Power supply	DC24V~30V		
Dimensions WxHxL	67.5x129x520 mm	85.5x110x636 mm	100x115x498 mm

